

Choices for current U12 VUFC players in the 2018-19 season

January 28, 2019

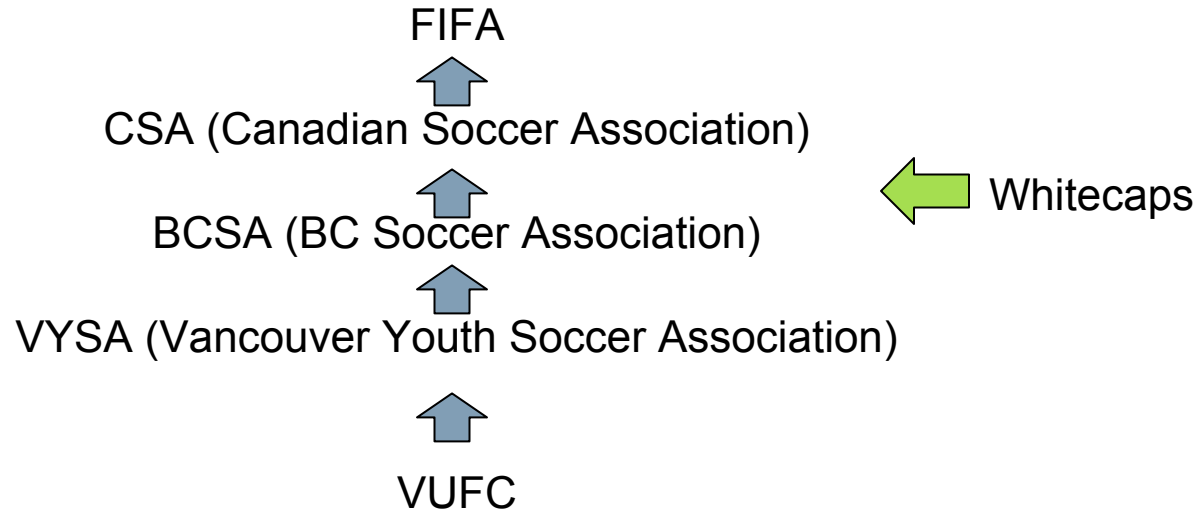


New for this year

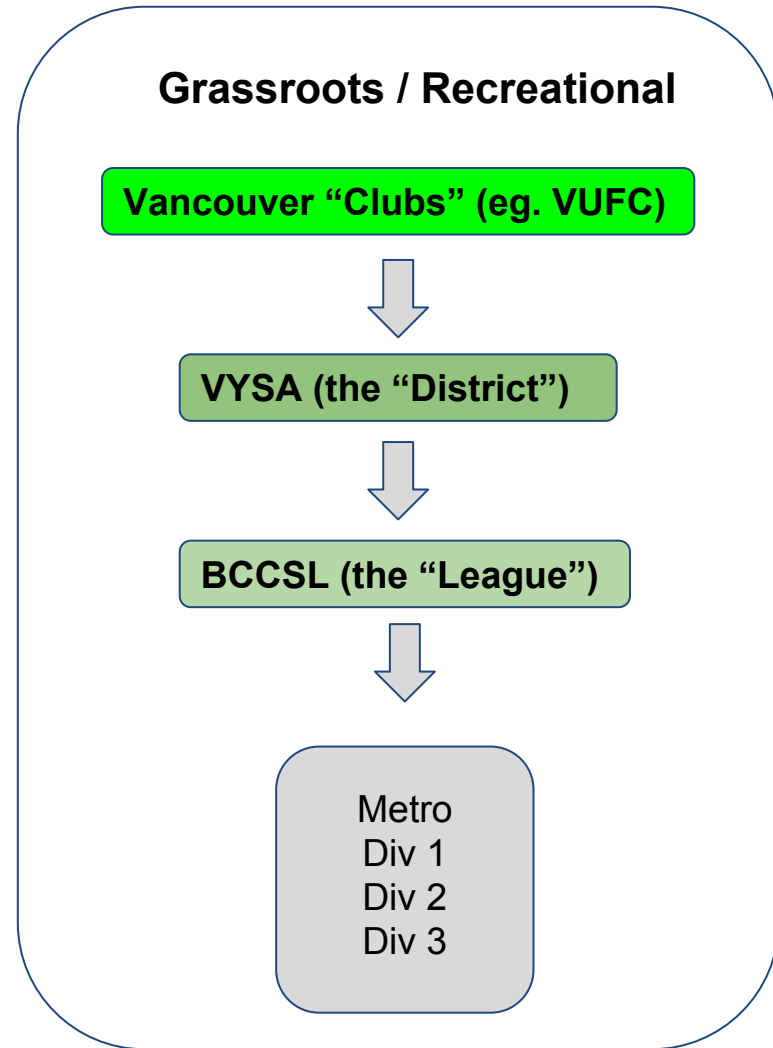
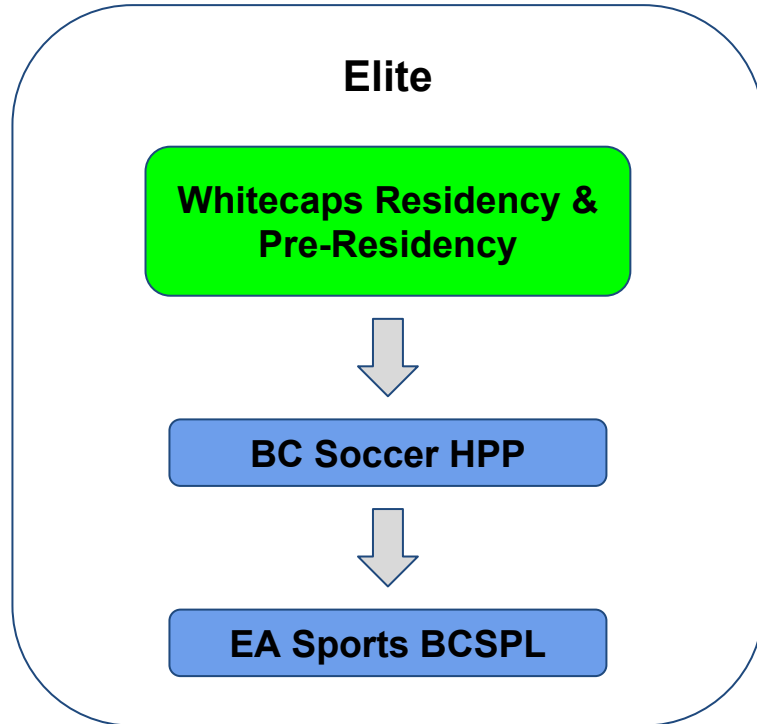
- Metro is now an option for VUFC teams to apply for
- TD has final say on roster sizes and composition
- Aside from rare cases involving extenuating circumstances, players will only be added to rosters from (a) Alternate lists created at Phase 4 and by direction of the TD for players who move to Vancouver between the end of Evaluations and the start of the season
- **MANDATORY:** Coaches must have complete and up to date Criminal Record Check on file with the club before they will be accepted as a coach
- **MANDATORY:** Coaches must have taken the LTPD coaching course applicable to the age they are coaching (Learn to Train for U9 to U12 and Soccer for Life for U13-18)



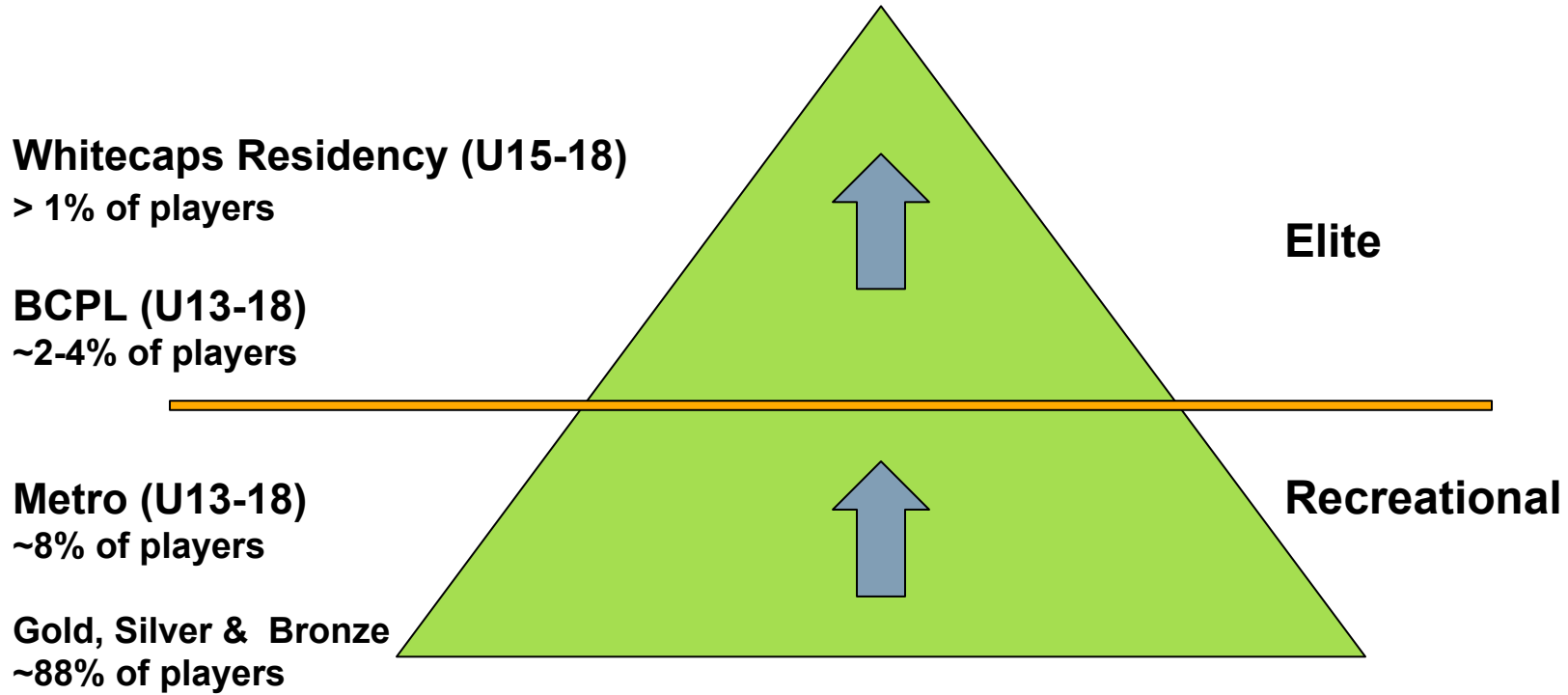
Local soccer governing structure



League structure



Pyramid of play



Leagues by age

Age Group	Division	League	Governing Body	Game Format
U11 & U12 Boys	Div 1	BCCSL	BCCSL	8 a side
	Div 2			
	Div 3	VYSA	TBD	
U11 & U12 Girls	Div 1	BCCSL	BCCSL	8 a side
	Div 2			
	Div 3	VYSA	VYSA	
U13-18 Boys	Metro	BCCSL	BCCSL	11 a side
	Div 1			
	Div 2			
	Div 3			
U13-18 Girls	Metro	BCCSL	BCCSL	11 a side
	Div 1			
	Div 2			
	Div 3			



Whitecaps programming

- Pre-residency starts at U15
- Residency starts at U16
 - ~ 22 U16 boys and 20 U18 boys
- Girls participate in CSA/Whitecaps REX program
 - ~24 players between U14 and U18
- Caps now have Academy Centres in every province except Quebec and PEI
- These all feed into Pre-residency and residency programs.



Guiding principles of VUFC Evaluations

- Objective
- Transparent
- BCSA and LTPD compliant
- Checks and balances
- Season long



Objective of VUFC Evaluations

- Goal of our Evaluations is to ensure all our players are put on teams that are suitable for their current level of play.
- Increases likelihood of a positive playing and training experience and thus continued play with the club.
- By then putting them in the right division we facilitate appropriate level of competition
- Reduce attrition, keeps kids playing



Structure of VUFC Evaluations

Phase 1:

VUFC staff coach reports on players

Phase 2:

Team coach Player Assessment Reports at end of season

Phase 3:

On field, end of season evaluation sessions scored by independent evaluators

Phase 4:

Opinion and notes of incoming coaches to be used with all other available data at a team formation meeting led by senior staff coaches

Team rosters are posted online at the conclusion of this process.



Phase 3: where do players start?

- For U12 to U14 Evaluations, you start Phase 3 at the level you just finished playing.
- If you want to be considered for a higher level you request that on the Phase 3 registration
- Those requests are evaluated by cross-referencing Phase 1 & 2 scores
- Invites are sent to those that a reasonable chance of making the level requested.
- Those not invited are given the opportunity to come to an extra session that precedes the Div 2 or 2 sessions if they feel strongly they should still be considered
- Players that show well at that session will be invited to the Div 1 or 2 session they requested
- Players that played in the Metro Division of BCCSL this past season and want to be considered for VanU Metro or Div 1 teams start at the Metro/Div 1 Phase 3 sessions



Role of parents

- Read the information provided by the club on our website including Evaluation Policies. Follow instructions provided.
- Register for Phase 3 well in advance.
- Do not believe or start rumours. If you hear rumours, advise people to check them against published VUFC info
- Perspective: this is not the start of a professional career or the end of the world
- Remain civilized. Kids' sports do strange things to adults



U13-18 BCCSL league and cup play

- BCCSL extends from Whistler and Sunshine Coast to Chilliwack
 - Priority is to regionalize divisions where possible
- All BCCSL divisions except Metro will be regionalized
- In January, based on results to that point, Div 1-3 teams are placed into six team League Championship Groups for rest of season to determine league champions.
- Coastal Cup play begins, can lead to Provincial Cup in July



BCSPL Clubs

Fusion FC: Draws from Vancouver and Richmond primarily.

Mountain FC: Draws from North Shore and Burnaby primarily.

Coastal FC: Newly formed club that merges South Fraser FC, which operated a BCPL franchise that drew primarily from south Surrey, with its primary feeder clubs Semiahmoo and Peace Arch. This club is now fully integrated to run teams from BCPL to Bronze.

Coquitlam Metro-Ford: Also runs all levels of play from within one club. Draws from Burnaby to Maple Ridge primarily.

Surrey United: Also runs all levels of play from within one club. Draws from all over Surrey as well as Langley.

Fraser Valley FC: Joint venture between several Fraser Valley clubs now.

Thompson-Okanagan: Based in Okanagan, mainly Kelowna

Vancouver Island Wave: Based in Victoria



Characteristics of BC SPL

No boundaries: Players can play anywhere they want and unlike other leagues there is no restriction on the number of Out of District players

Governance: This is the only youth league that is not governed by Districts (ie. VYSA). It is overseen directly by BCSA

Expense: Considerably more expensive than other leagues. Lower Mainland franchises charge between \$1800 and \$3000 per season. Kit is additional. Fusion and Mountain are the most expensive of the Lower Mainland franchises. Fees are paid monthly. Each club handles additional costs like tournaments fee and travel costs related to league and tournament play differently.

Commitment: Three practices per week plus games and tournaments; most teams travel at least regionally for tournaments.

Playing season: The season officially starts in mid-February, has a break in the summer (4-6 weeks) and continues through the fall until mid-November. At this point, teams continue to train, enter tournaments and play exhibition games through the winter with varying breaks.

U13 "Intakes": When you finish playing U12 at VUFC there is what is called a U13 intake. These are the only tryouts that BC SPL franchises run. Fusion's are at the start of February. Once a team is picked they train and play exhibition games and/or tournaments through the spring. They then play a 'mini-season' in the fall that ends at the same time as the other age groups. Over the winter, changes to the squad (ie. players are cut and added) and they then become the U13 BCPL team when the season-proper begins in February.

Evaluations: As mentioned there are no tryouts or evaluations for older age groups. Player selection is done via scouting which leads to invites to train with BCPL franchises. From there players may be offered spots on teams. While player movement is supposed to be constrained to early spring, the reality is that we now see three windows emerging for player movement: early spring, September and the end of the season in late November.



Co-operation between VUFC and Fusion FC

- Extensive communication during U13 Intake evaluation process. Fusion coaches have been encouraged to attend VUFC programming during the season to evaluate players rather than base player selection on two or three tryouts (based almost exclusively on 11 a side play). As a result, Fusion coaches attend and/or run sessions for our U12 Gold teams (already been out several times)
- Jasmine Mander is coaching Fusion U13 Girls intake
- Anthony Cristante is coaching the Fusion U13 Boys intake
- We also have interactions with Mountain FC & Coastal FC regarding players



Characteristics of Metro

VYSA has changed to the Multi-Club model for Metro that six of the other seven Districts use to affiliate teams in the Metro division. This means VanU, for the first time, will be able to apply for Metro teams for the 2019-20 season.

VYSA will set criteria for Metro team applications; VUFC will abide by these.

District boundaries: Players can play anywhere they want but teams are restricted to three out of District players at younger age groups and five at older age groups

Governance: The league now falls under the direct governance of BCCSL.

Playing season: The season run from September to March with Cup play after that

Evaluations: March-April



VUFC Metro/Div 1 U13 Program

Description: In response to strong demand from those who want to stay with VUFC and still have a high level, developmental soccer experience, the club started the Gold Plus Program. A new name is forthcoming given the division is called Div 1 rather than Gold and we will now also be entering Metro teams.

- Players on these teams will receive a curriculum-driven season long training plan.
- VUFC staff coaches are involved in 75% of Gold Plus team practices.
- Almost all Div 1 teams enter the BCSA 'B' Cup but are permitted to choose 'A' Cup.

Composition: In addition to any Metro teams in this age group, there will generally be one U13 Boys Div 1 team and one U13 Girls Div 1 team. Final decisions on how many teams we put at each level will continue to be made at the Phase 3 sessions. These decisions will be communicated immediately after they are made.

Commitment: In the spring, training once per week plus Cascadia Spring League. Fall/winter: Two practices per week plus 12 Academy sessions in the fall and eight in Jan/Feb for U13 Metro. Academy is optional for U13 Div 1 teams.

Fees: to be set by the end of February

Playing season: The season starts in March 2019 with a spring component that ends at the end of June. The regular season will run from September to March with Cup play after that.

Location: Traditional VUFC fields on the west side. VUFC intends to use Pt Grey Turf for Metro team training as much as possible.

Evaluations: March or early April.



VUFC U13 Div 2 and 3 Programs

- VanU Academy is open to players at all levels of U13
- Friday Plus Program is a free, team-based program available to U11 to U13 Div 2 and 3 teams
 - Staff coach support at every training session
- All VUFC teams, from U9 to U18, have staff coaches come and run four training sessions for them through the year and provide game support at two games. This is included in regular registration fees.



U13 BCCSL league play

- 11 a side
- Full size field
- Offside called at the half-way line
- Retreat lines one third of the way from goal line in effect on goal kicks
- 35 minute halves
- Still unlimited subs
- Teams generally carry 15 to 18 players



U13 BCCSL league and cup play

- BCCSL extends from Whistler and Sunshine Coast to Chilliwack
 - Priority is to regionalize divisions where possible
- All BCCSL divisions except Metro will be regionalized
- In January, based on results to that point, Div 1-3 teams are placed into six team League Championship Groups for rest of season to determine league champions.
- Coastal Cup play begins, can lead to Provincial Cup in July



Elements to consider

What does your child want out of soccer?

- Level of play (desire to play at highest level)
- Coaching (desire to have quality coaching)
- Personal enjoyment (ensuring soccer experience is fun)
- Opportunity to travel (tournaments, development trips)
- Opportunity to be considered for representative teams (Province, National)
- Ability to play with friends (social considerations)

Family considerations:

- Time commitment (ability to play other sports or family activities)
- Financial commitment (higher levels generally more expensive)



Important considerations

Some of the previous questions need to be answered from an adult perspective but for others the only perspective that's important is the player's. Recognize which is which.

Important question: How will my son/daughter handle it if they tryout and don't make the team?

Equally important question: How will my son/daughter handle it if they tryout and they do make the team?



Perspective...

“Those of us who are involved in youth development or in soccer academies, must bear in mind that, of the 16-year-olds who sign a professional contract, 85% are out of the professional game by the age of 21.”

*Higgins, T. Laying the foundations.
The Technician - UEFA (Jan. 2007)*

- 2004: Barcelona pay 250 000 Euros for 12-year-old Dennis Krol from Bayer Leverkusen youth team and pay his father €7,000 a month
- He's 26 now, prime age for professional players
- He's playing amateur soccer in Germany

- Whitecaps entered MLS in 2011
- Number of Vancouver area developed players that have played for them: 1 (45 minutes)



Questions?

